

Spring 2009 Family Matinee Program

ST. JOHNS TWIN THEATRE • 8704 N. LOMBARD • PORTLAND, OR • 503-286-1768

The St. Johns Theatre is proud to present the annual **Spring Family Matinee Program**. Matinee Season Tickets admitting children to all 10 movies are now available through selected school PTA's or the theatre box office for only \$7.00, just 70 cents per movie. Otherwise, the price for tickets purchased separately will be \$4.00 for each show. PARENTS accompanied with children holding season tickets are admitted **FREE!** Adults without children will not be admitted to the matinees in this program. Children 3 and over must have tickets to be admitted.

NO OUTSIDE FOOD OR BEVERAGES WILL BE ALLOWED IN THE THEATRE.

Matinees will be shown each Saturday and Sunday at 12:00 noon and 2:30pm; and 5:30pm on Monday. The box office opens at 11:30am Saturday & Sunday, and 5:00pm on Monday. Please arrive early for best seating. Movie titles are subject to change based on availability.

Week 1 Feb 21 - 23

Disney's Bolt

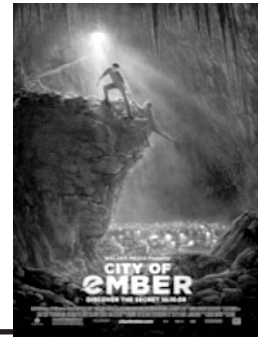
PG 96 min.



Week 6 March 28 - 30

City of Ember

PG 123 min.



Week 2 Feb 28 - March 2

Madagascar

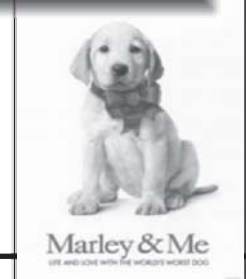
PG 89 min.



Week 7 April 4 - 6

Marley & Me

PG 120 min.



Week 3 March 7 - 9

Disney's High School Musical 3

PG 115 min.



Week 8 April 11 - 13

Surprise Feature



Week 4 March 14 - 16

Disney's Beverly Hills Chihuahua

PG 91 min.



Week 9 April 18 - 20

Disney's Bedtime Stories

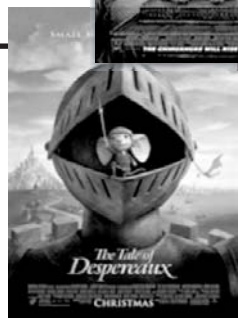
PG 95 min.



Week 5 March 21 - 23

The Tale of Desperaux

G 87 min.



Week 10 April 25 - 27

Surprise Feature



***** DRAWING FOR TWO \$50.00 GIFT CERTIFICATES *****

Please deposit your registration card at the theatre for the drawing.